

EMF Survey Report

Radio Frequency Fields (Antenna Emissions)

Prepared for

[Client Name]

Site Locations

[Location 1]

[Location 2]

1st Survey Date: [1st Date]

2nd Survey Date: [2nd Date]

Report Date: [Report Date]

EMF SERVICES LLC

16681 Amazon Ln
Fort Myers, FL 33908
Phone 845-276-9500
Fax 866-321-2082
www.emfservices.com

This is a survey report of measurement results. It is not intended to be a review of existing science on the topic of radio frequency exposure.

Any statements regarding potential health effects at precautionary exposure levels are not included to make the case that such exposure constitutes a health risk, only to state that such concerns exist, and are being addressed by ongoing research.

The objective of this report is not to advocate for the adoption of any precautionary guideline, only to state that such guidelines have been proposed by certain groups, and adopted in certain locations.

The format of this report has spaces for entry of data from a second follow-up survey. The presence of such spaces does not imply that a second survey is recommended or has been contracted.

TABLE OF CONTENTS

1.0 SUMMARY AND CONCLUSIONS

1.01	Measurement Results	1
1.02	Exposure Significance	3
1.03	Recommended Corrective Measures	3

2.0 BACKGROUND INFORMATION

2.01	Referenced Exposure Guidelines (FCC)	4
2.02	Informal Precautionary Guidelines	7
2.03	International RF Protection Guidelines	9
2.04	Radio Frequency Measurement Units	11

3.0 SURVEY METHODOLOGY

3.01	Instrumentation	12
3.02	Procedures	12

APPENDIX MEASUREMENT DATA

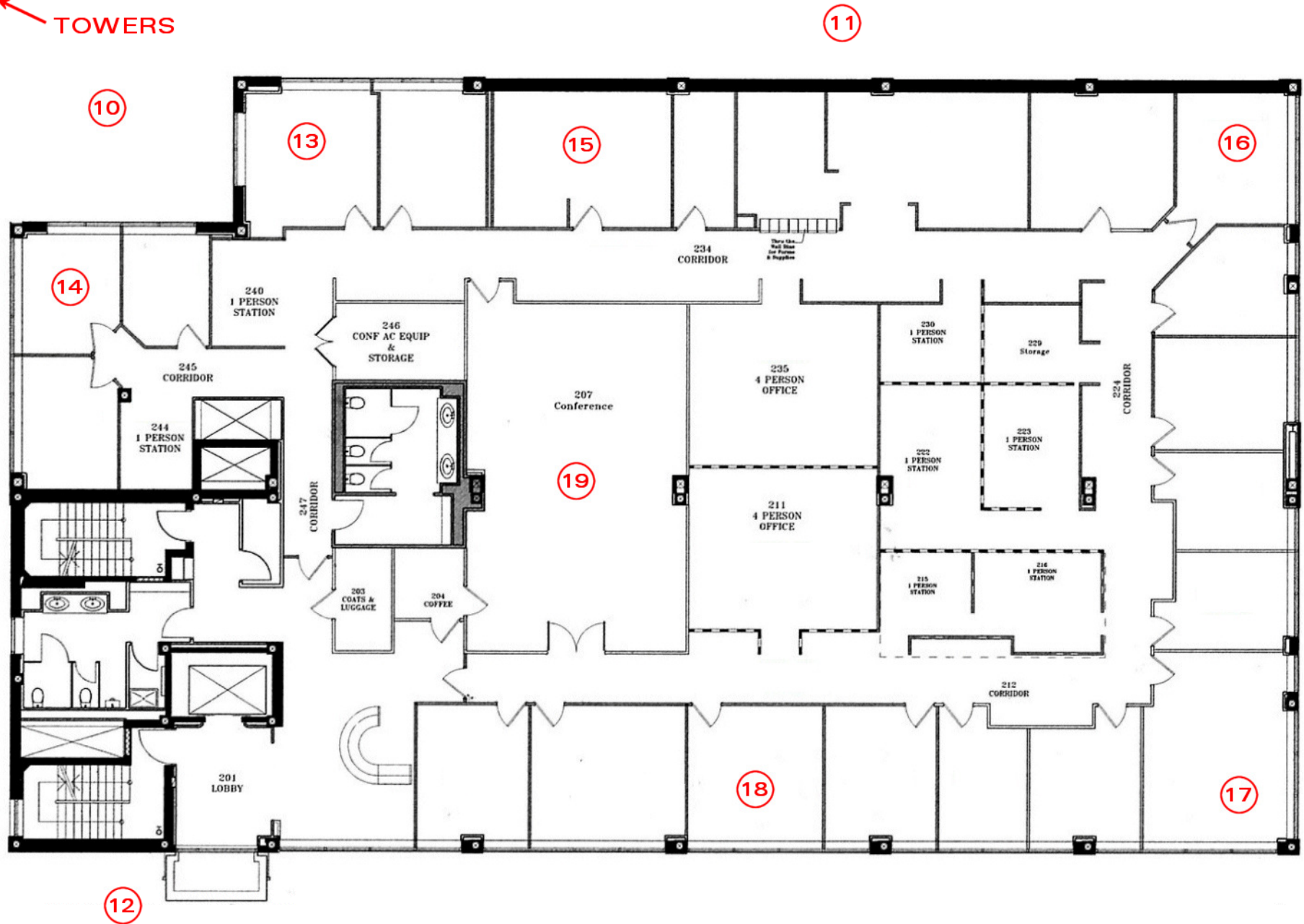
Detailed Measurement Results
Test Locations
Spectrum Analyzer Plots
Site Photos
Equipment Calibration Certificates

Appendix

MEASUREMENT RESULTS

PT #	Survey	Location	Total RF Power nW/cm ²	% MPE	% Total Power from FM	% Total Power from TV	% Total Power from Cell	Total Cell RF Power nW/cm ²	uW/m ²	Notes
1	1 st	Sample Only	16.4	0.01%	52%	8%	41%	6.7	66.6	<p>% MPE = % FCC Maximum Permissible Exposure. Calculation is based on cumulative MPEs for multiple frequency ranges.</p> <p>Total Cell levels exceeding 100 nW/cm² are highlighted in red (represents informal precautionary exposure guideline for pulsed signals).</p> <p>nW/cm² = nanoWatts per centimeter squared (American)</p> <p>uW/m² = microWatts per meter squared (European)</p> <p>100 nW/cm² equals 1,000 uW/m²</p> <p>Multiply nW/cm² by 10 to get uW/m²</p> <p>Total Cell RF Power includes 700, 900, 1900, 2100, 2600 MHz bands where pulsed digital signals predominate.</p>
	2 nd									
2	1 st	Sample Only	19.7	0.01%	43%	6%	51%	10.0	99.7	
	2 nd									
3	1 st	Sample Only	13.3	0.01%	63%	10%	27%	3.6	35.8	
	2 nd									
4	1 st	Sample Only	18.4	0.01%	46%	7%	47%	8.7	86.5	
	2 nd									
5	1 st	Sample Only	2.1	0.00%	45%	12%	43%	0.9	9.1	
	2 nd									
6	1 st	Sample Only	1.4	0.00%	69%	19%	12%	0.2	1.7	
	2 nd									
7	1 st	Sample Only	1.4	0.00%	69%	19%	12%	0.2	1.7	
	2 nd									
8	1 st	Sample Only	2.0	0.00%	48%	13%	39%	0.8	7.7	
	2 nd									
9	1 st	Sample Only	1.3	0.00%	70%	19%	10%	0.1	1.4	
	2 nd									
10	1 st	Sample Only	6.3	0.00%	15%	4%	81%	5.1	51.3	
	2 nd									
11	1 st	Sample Only	20.1	0.01%	94%	6%	1%	0.1	1.1	
	2 nd									
12	1 st	Sample Only	6.7	0.00%	14%	4%	82%	5.5	54.9	
	2 nd									
13	1 st	Sample Only	1.5	0.00%	64%	18%	19%	0.3	2.7	
	2 nd									
14	1 st									
	2 nd									
15	1 st									
	2 nd									

TOWERS

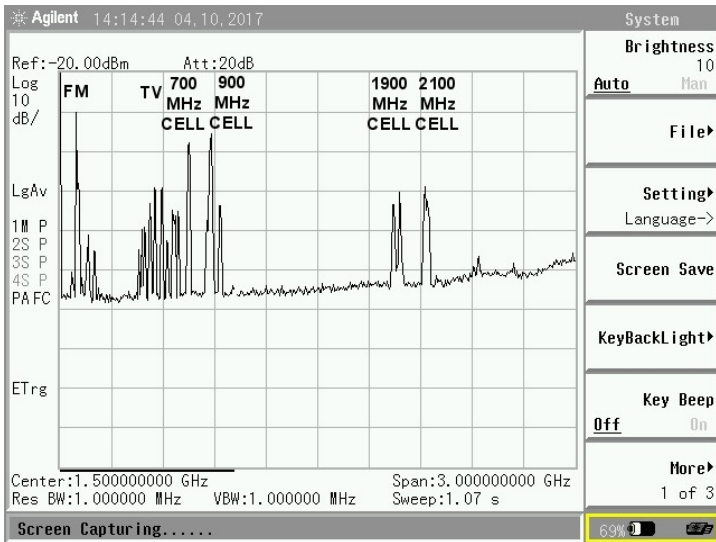


RF MEASUREMENT POINTS

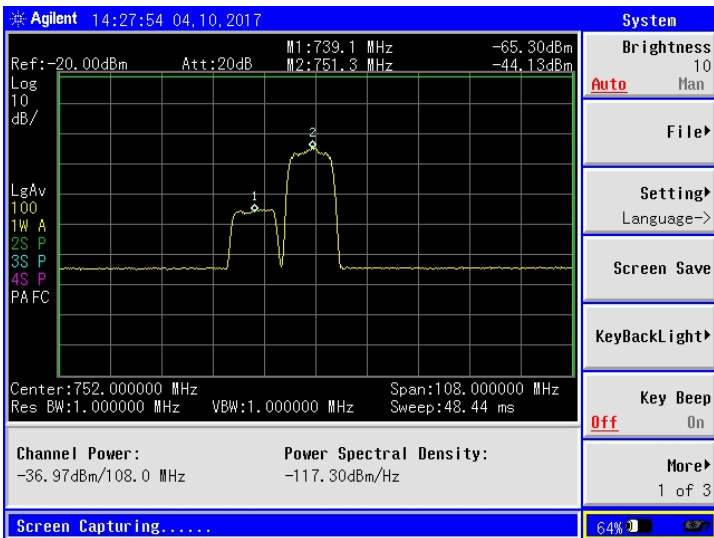
RF Spectrum Analyzer Plots

1st Survey

2nd Survey



0 MHz - 3000 MHz



700 MHz Cellular Band

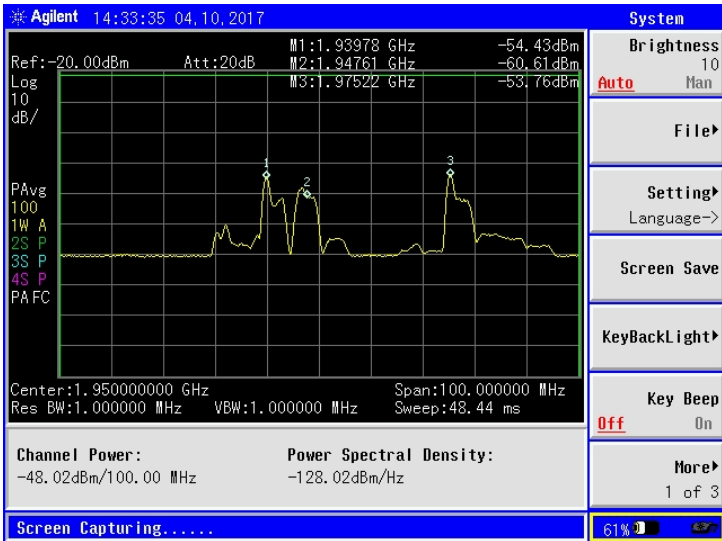


900 MHz Cellular Band

RF Spectrum Analyzer Plots

1st Survey

2nd Survey



1900 MHz Cellular Band



2100 MHz Cellular Band